



GRANITE RIDGE

REMARKABLE VALUE ♦ ELEVATED LIFESTYLE

RESIDENCE THREE



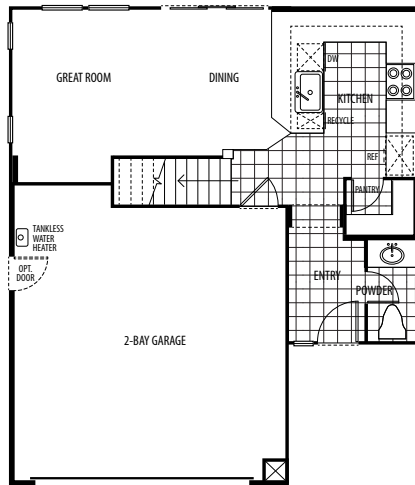
3A



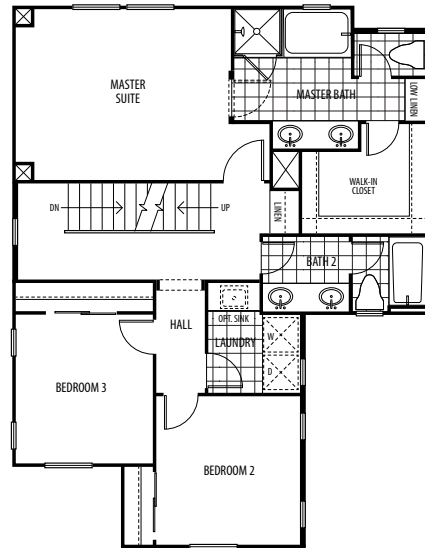
3C

2,085 SQ. FT. | THREE STORY

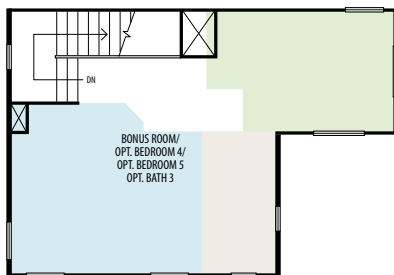
3 BEDROOMS + BONUS ROOM | OPTIONAL 4TH & 5TH BEDROOMS | UP TO 3.5 BATHS



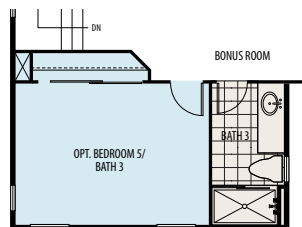
LOWER LEVEL



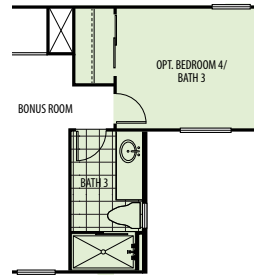
MIDDLE LEVEL



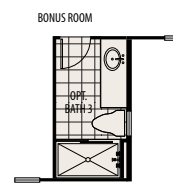
UPPER LEVEL



OPTIONAL
BEDROOM 5 / BATH 3



OPTIONAL
BEDROOM 4 / BATH 3



OPTIONAL
BONUS ROOM / BATH 3

Due to a policy of continued enhancement or necessitated changes in the construction process, Far West Granite, LLC reserves the right to change price, design and specifications without prior notice or obligation. All square footages are approximate only. The floorplans, home elevations and colors, landscaping and site plans are an artist's depiction. Size, number and location of windows, front entries and doors may vary per plan and/or elevation. Views vary per homesite location. All imagery is representational and does not depict specific building views, orientation, mass or future amenity details. Models or photos do not reflect racial preference. Buyers at Granite Ridge will automatically become members of the Granite Ridge Homeowners Association which maintains all common areas including private streets, front yards, mail boxes, and common landscaped areas.

